

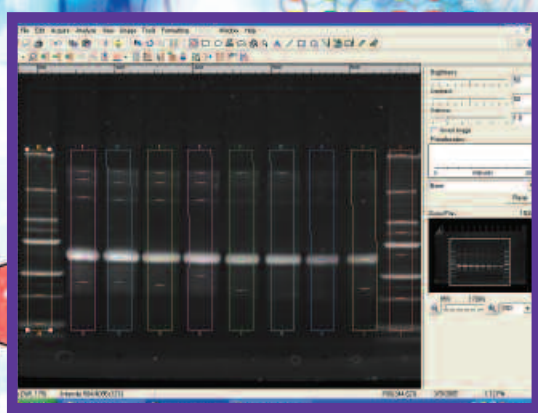


# Doc-It<sup>®</sup>LS Image Analysis Software

Enhancement, Analysis  
and Reporting  
Capabilities

A

G



C

UVP

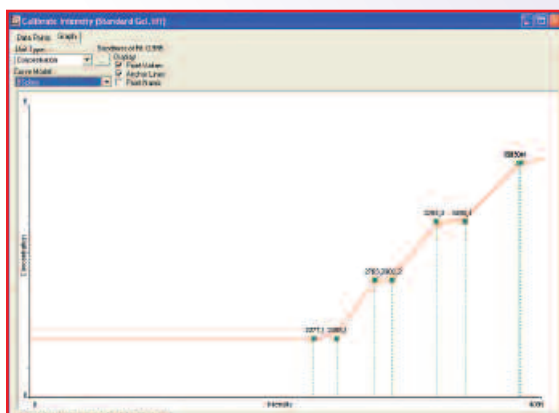


## Doc-ItLS Image Analysis Software

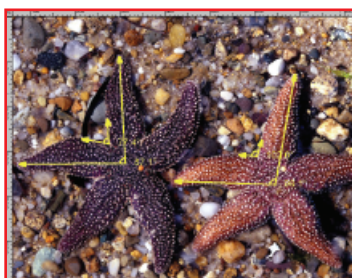
Doc-ItLS Image Analysis Software is designed as an easy to use software package for 1D analysis of gels, plates and membranes as well as colony counting. The Doc-ItLS software offers many image enhancement tools, analysis functions, reporting capabilities and supports 21 CFR Part 11 compliance. The user friendly design allows users to configure many features to their preferences.

### 1D Lane Densitometry/Analysis

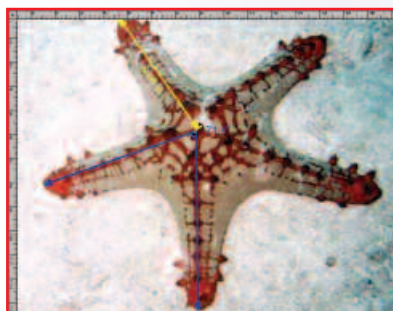
- Detect straight, curved or slanted lanes and bands automatically or manually
- Create histograms for detailed visual analysis
- Generate easy to interpret quantitative data of lanes and bands
- Calibrate using multiple Molecular Weight (MW) standards
- Apply one of four multiple background correction curve methods for more accurate analysis
- Measure angles, areas and lengths with Measurement Tool
- Open any 8, 12 or 16 bit images captured with UVP's BioImaging Systems or transfer images from scanners with a Twain interface



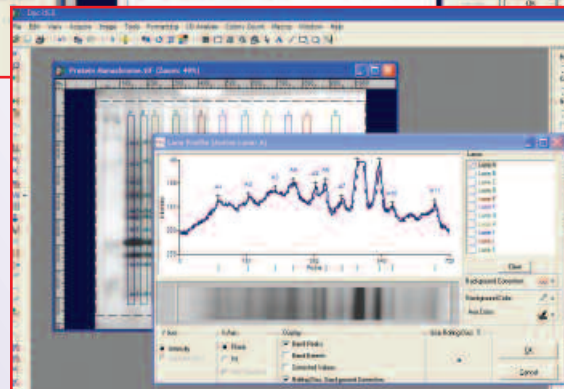
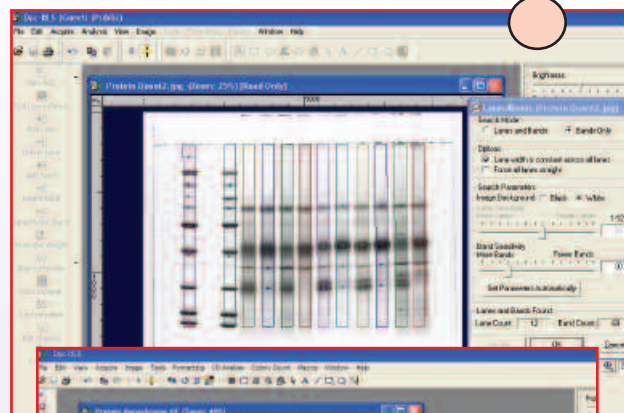
**Concentration Curve** is used to perform quantitation to determine concentration amounts.



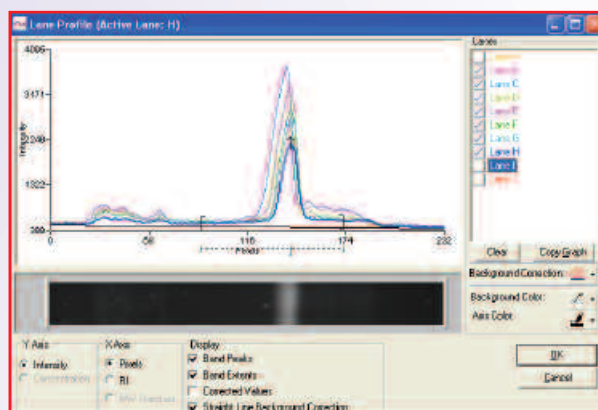
**Measurement Tool** enables researchers to measure angles, areas and lengths.



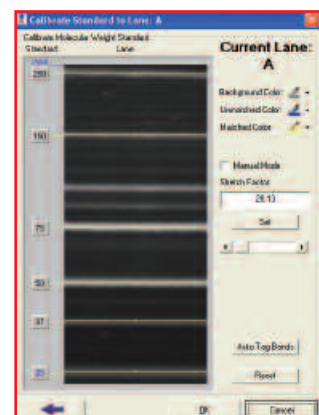
**Calibrate Molecular Weight (MW) standards** with just one click. Add your own MW standards to the preset standards list.



**Doc-ItLS Software** provides automatic lane and band finding algorithms for quick, accurate electrophoresis analysis.



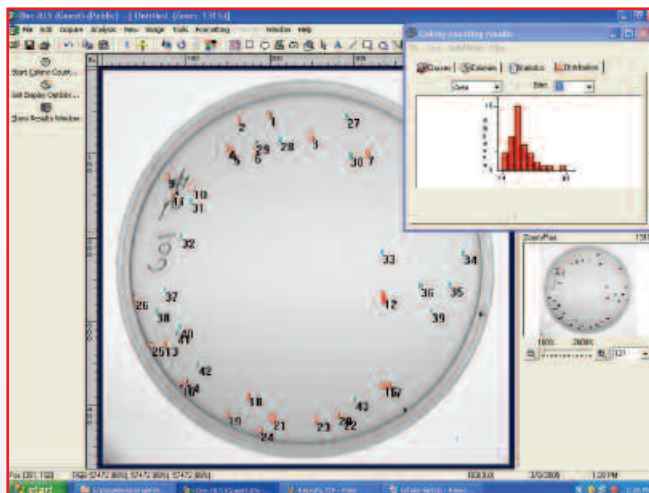
**Lane Profile Graph** creates a line graph in different colors of one or more lanes selected. Display band peaks, extents and values.



## Automated Colony Counting

This object counting recognition tool is suited for identifying bacterial colonies in a petri dish.

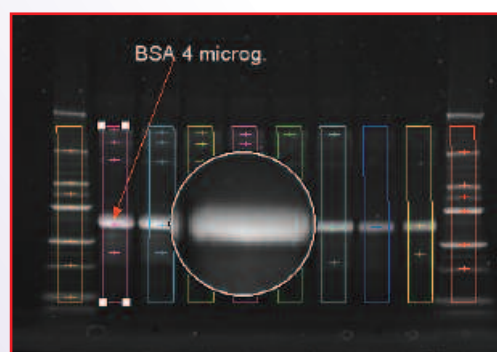
- Click through the wizard commands to set the automatic colony counting
- Split and merge colonies as well as add and remove colonies
- Use the free-form Region of Interest (ROI) tool to precisely define the area
- Automatically perform extensive statistics with the colony histogram function
- Select specific filtering criteria such as area or size of colonies



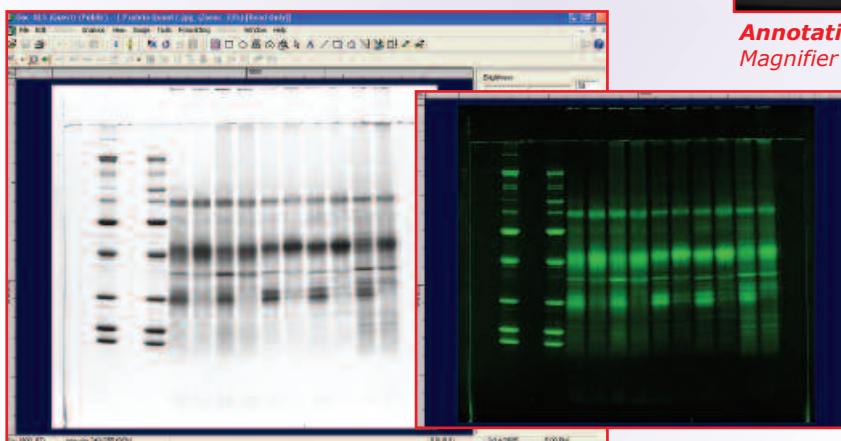
**Colony Counting** function allows automatic counting. Toolbar on the left shows easy to use colony icons.

## Image Enhancement Capabilities

- Enhance images with brightness, contrast, gamma, emboss, invert and pseudo color
- Annotate with text, lines, arrows, ellipse, and highlighter tools; show, hide or burn into image
- Select from filters to sharpen, blur and remove frequency based noise



**Annotation** options are available. Use the Magnifier Tool to get closer to your gel.



**Pseudo Color** images highlight specific intensities for analysis purposes.

## Support for 21 CFR Part 11 Compliance

Doc-It Software fully supports image security and change logs to assist with 21 CFR Part 11 compliance.

- Track image and analysis history and show image properties and user comments
- Control of account set-up by Administrator, determine usernames and passwords, as well as permissions for viewing and editing images
- Maintain login history of all accounts

**Image History** records of changes made to images. Report shows actions taken along with user information, notes, date and time.

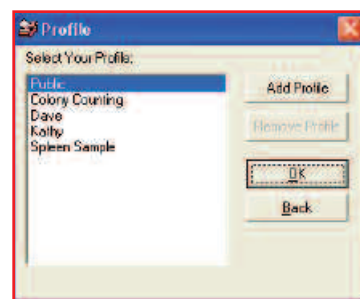
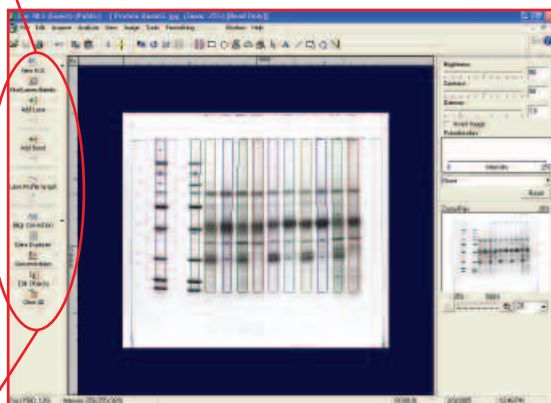




## User Profiles and Preferences



Researchers can personalize their workspace by placing tool bar icons along the side or across the top, with or without text. Then save the profiles by user name. Set up user accounts with passwords to protect user data.



**Profile Menu** for set-up of multiple users and experiment preferences.

**Tool Bar layout** can be saved for different users. The navigator tool bar displayed on the left prompts users to the next step in the analysis process. The navigator can be customized for different types of analysis.

## Report Generation

- Save images as various file formats including TIFF, JPEG, BMP, TGA, PNG and GIF for use in presentations or documentation
- Create detailed and user-configured reports showing extensive analysis results on MW, Rf, precise position of bands, band intensities, etc.
- Use the Filter Data button to choose specific data for reports
- Configure the Qwik-Link icon to automatically open an external software application
- Export data to Microsoft Excel or simple-text using Dynamic Data Exchange (DDE)

Data Explorer (Standard Gel.tiff)						
Analysis	Lanes	Bands	Concentration	Molecular Weight		
	A	B	C	D	E	
1	402.72	244.39	244.39	244.39	238.9	
2	250	143.92	135.26	138.09	135.26	
3	151.71	72.02	69.06	69.16	65.74	
4	75	61.86	60.62	60.01	60.01	
5	50	48.97	47.97	46.98	45.54	
6	37.39	37	37.39	37	35.42	
7	25	25	24.73	23.68	22.91	

**Reports** configure your reports and output to Excel or other software programs.

- Personalize images and reports with identifying descriptions on lanes and bands

## Ordering Information

### Doc-ItLS Image Analysis Software

Minimum System Requirements: Windows 2000 SP4, Windows XP Pro SP1 or later

97-0185-02

**Biolmaging Systems:** Select from basic gel documentation systems to advanced imaging and analysis systems for chemiluminescence, in vivo/in vitro, fluorescence, colorimetric imaging and more!



BioDoc-It



DigiDoc-It



GelDoc-It



EC3



BioSpectrum® Imager



**UVP, Inc.** Upland, CA **Tel:** (800) 452-6788  
(909) 946-3197 | **Fax:** (909) 946-3597  
**Ultra-Violet Products Ltd.** Cambridge, UK  
**Tel:** +44(0)1223-420022 | **Fax:** +44(0)1223-420561

Go to [www.uvp.com](http://www.uvp.com) for additional information.

For information contact: